



Caledonian

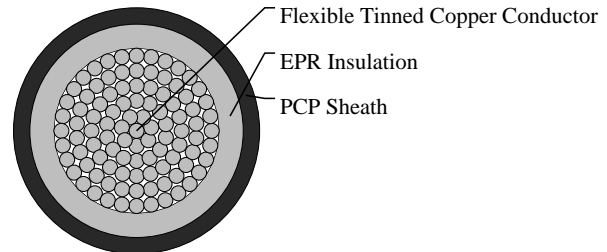
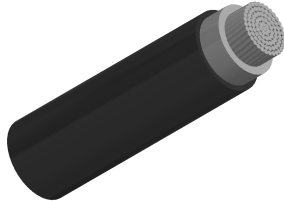
Railway Cables

www.caledonian-cables.com

marketing@caledonian-cables.com

NSGAFOU Cables

RF602-NSGAFOU-1G120S



APPLICATIONS

The cables are designed for use in switch cabinets, wiring of devices, trains and buses as well as in dry rooms.

STANDARDS

DIN VDE 0250-602

VOLTAGE RATING

1.8/3 KV

CABLE CONSTRUCTION

Conductors: Flexible tinned copper to IEC 60228 class 5

Insulation: EPR type 3G13.

Outer sheath: PCP type 5GM3.

PHYSICAL AND THERMAL PROPERTIES

Minimum Bending Radius: 4 x OD

Temperature Range: -25°C to +80°C (during operation); -10°C to +60°C (during installation)

DIMENSION AND PARAMETERS

| No. of Cores × Cross-sectional Area | No./Nominal Diameter of Strands | Nominal Insulation Thickness | Nom. Overall Diameter | Approx. Weight | Max. DC Resistance at 20°C | Current Rating |
|--|---------------------------------|------------------------------|-----------------------|----------------|----------------------------|----------------|
| No. × mm ² | no./mm | mm | mm | kg/km | Ω/km | A |
| 1 x 120 | 608/0.5 | 2.2 | 21.2 | 1280 | 0.164 | 528 |



Highly Flexible



Impact Resistant



Laid In Ducts



Oil Resistant



Water Resistant